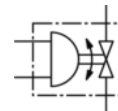
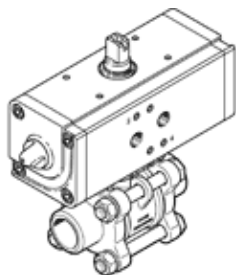


Ball valve with drive unit VZBA-1"-WW-63-T-22-F0405-V4V4T-PP30-R-90-C

Part number: 1810734

FESTO



Data sheet

Feature	values
Design structure	2-way ball valve Swivel drive
Type of actuation	pneumatic
Assembly position	Any
Mounting type	Line installation
Process valve connection	Weld-on ends/weld-on ends
Switching position indicator	Slot direction = flow direction
Nominal diameter DN	25
Operating pressure	6 ... 8,4 bar
Nominal pressure of process valve	63
Medium	Compressed air in accordance with ISO8573-1:2010 [-:::] Inert gases Water (no water vapour) Neutral fluids
Operating medium	Compressed air in accordance with ISO8573-1:2010 [7:4:4]
Medium temperature	-10 ... 200 °C
Ambient temperature	-10 ... 80 °C
Flow rate Kv	71,5 m ³ /h
Max. surface temperature assembly	TX
Explosion group assembly	IIC
Materials note	Contains PWIS substances Conforms to RoHS
Food-industry approval	No
Product weight	2.300 g
Corrosion resistance classification CRC	3
ATEX category Gas	II 2G
ATEX category Dust	II 2D
Explosion-proof ambient temperature	-10°C ≤ Ta ≤ +60°C
Note on operating and pilot medium	Lubricated operation possible (subsequently required for further operation)