

# CAST IRON SIGHT GLASS SKT 6

## MAIN CHARACTERISTICS

The SKT6 sight glass is dedicated to the visual control and inspection of flow in pipes of standard low pressure and non corrosive fluids, like water. The SKT6 has a double windows construction and screwed connections. This controller is CE approved.

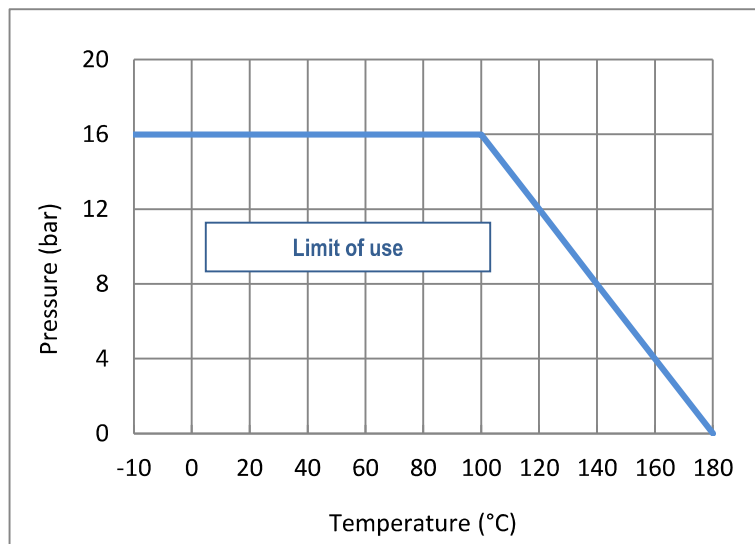
## AVAILABLE MODELS

DN 1/2" to 2".

BSP screwed connections.

## LIMITS OF USE

Max allowed fluid pressure : PS	16 bar
Max allowed fluids temperature : TS	-10°C / +180°C
Room temperature	-10°C / +60°C



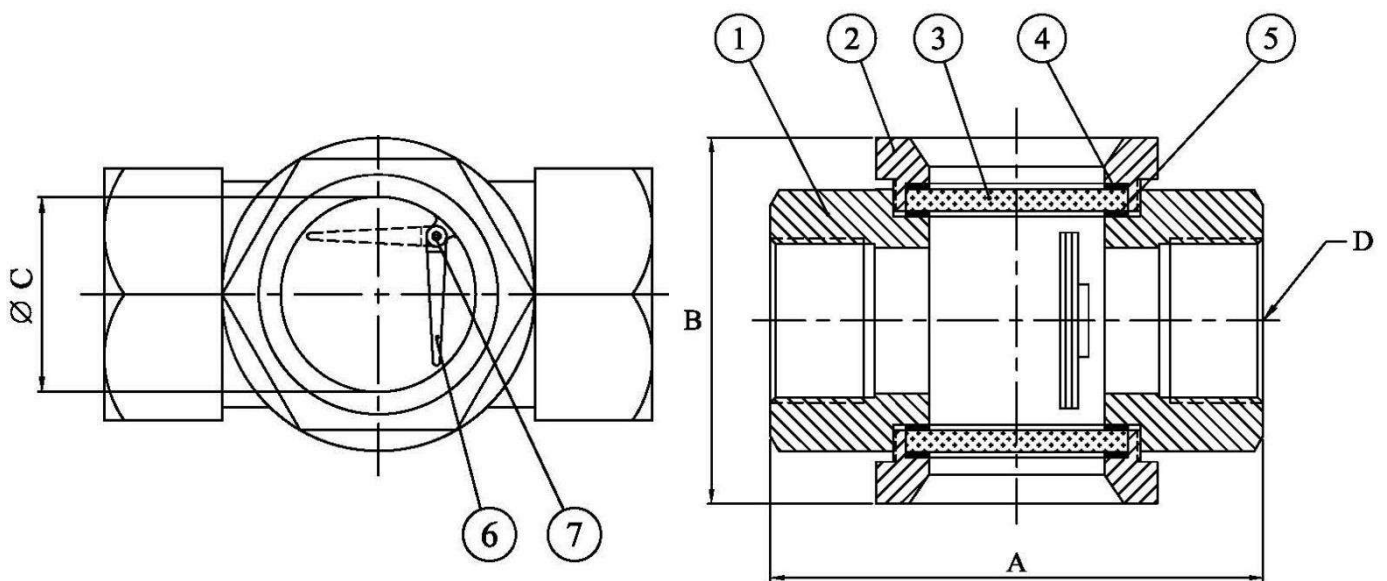
## REGULATIONS AND STANDARDS OF CONSTRUCTION

Item	Standard	ON	Item	Standard
Pressure equipment directive 97/23	<u>1/4" to 1"</u> : excluded		Size	EN 12516-1
	<u>1" 1/4 to 2"</u> : category II	TÜV 0035	Material Certificate	EN 10204 § 3.1
Cast iron materials	EN 1503-3			

# CAST IRON SIGHT GLASS SKT 6

## CONSTRUCTION

N°	Item	Quantity	Material
1	Body	1	Cast iron EN-GJL-200
2	Cover	2	Cast iron EN-GJL-200
3	Window	2	Soda lime
4	Top gasket	2	PTFE
5	Bottom gasket	2	PTFE
6	Flap	1	Stainless steel ANSI 304
7	Axe	1	Stainless steel ANSI 304



## DIMENSIONS (mm)

DN	1/2"	3/4"	1"	1" 1/4	1" 1/2	2"
A	75	90	90	120	120	140
B	70	75	83	110	110	125
C	22	30	30	42	42	51
Weight (kg)	0.7	1	1.2	2.1	2.1	3.3

Modifications reserved

# CAST IRON SIGHT GLASS SKT 6

## **MOUNTING AND MAINTENANCE**

- The sight glass can be installed in any position. In vertical position with downstream flow, the flap does not work.
- Downstream a drainer working by discharge steam trap, Respect a distance of 1 meter between this one and sight glass to avoid the thermal shocks on glasses.
- Before installation or maintaining, shut off the line using upstream and downstream valves.
- Remove the pressure inside and drain the pipe.
- If the pipe is warm, wait the complete cooling at room temperature.
- Wear protections equipments adapted to this kind of operation (gloves and glasses).
- Remove the two glass covers and remove the glasses.
- Clean the glasses and the inner part of the body.
- Verify the state of the glasses and check any starting of chemical corrosion or mechanical erosion. Replace it if necessary.
- Screw the controller on the piping by using an adapted sealing.
- Select the position of the sight glass on the line in order to make it visible for the operators.
- Bring back the installation in service.

## **SPARE PARTS**

Spare parts kits including 1 glass item (3) and 2 gaskets items (4) and (5).

DN	Ø glass (mm)	thickness (mm)	Code
1/2"	30	10	981070
3/4" - 1"	38	10	981071
1" 1/4 - 1" 1/2	55	10	981072
2"	63	10	981073