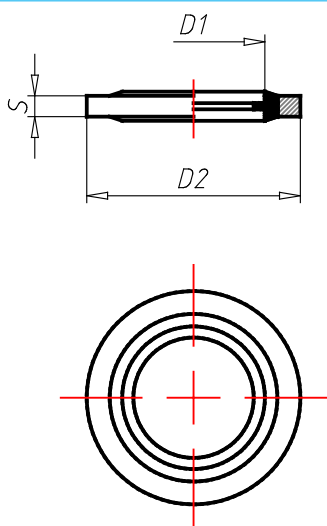


**Material:** Brass Nickel Plated  
**Working Temperature:** -20 ÷ 70 C°  
**Working Temperature:** F°  
**Working Pressure (max):** 60 bar  
**Working Pressure (max):** psi  
**Vacuum:** kPa  
**Vacuum:** Hg  
**Conformity:** RoHS

**Conformity:**  
**Conformity:**  
**Conformity:**  
**Conformity:**  
**Application** Pneumatic, hydraulic and oleodynamic circuits

## RA99

Bonded Seal, self centring



## RA99

## 3D

CODE	TYPE	D1	D2	S	G
05890000	RA99 00 M5	5.7	9	1	0.24
05890001	RA99 00 18	10.37	15.88	2	1.59
05890002	RA99 00 14	13.74	20.57	2	2.66
05890003	RA99 00 38	17.28	23.8	2	3
05890004	RA99 00 12	21.54	28.58	2.5	4.57
05890005	RA99 00 34	27.05	34.93	2.5	6.8