

• reading from left to right

- flexible version, small section
- stainless spring steel
- non glare, matt surface
- etched graduation for a clear reading

type A = mm / mm top and bottom 1/1 mm graduation

type B = ½ mm / mm top ½ mm and bottom 1/1 mm graduation

type C = inch / mm top 1/64 ; 1/32 and 1/16 inch graduation,
bottom ½ mm and 1/1 mm

Our steel rules from 500 mm up to 4000 mm are marked with the EC Code.
These steel rules conform to EC Class II and are qualified as reference pieces.
Therefore please order our calibration certificate together with the rule.

type A



type B



type C



ART N°

type A	type B	type C				
10 10010010	10 10020010	10 10030010	100	13 x 0.5	0.006	10 94001
10 10010015	10 10020015	10 10030015	150	13 x 0.5	0.008	10 94001
10 10010020	10 10020020	10 10030020	200	13 x 0.5	0.010	10 94001
10 10010025	10 10020025	10 10030025	250	13 x 0.5	0.012	10 94001
10 10010030	10 10020030	10 10030030	300	13 x 0.5	0.015	10 94001
10 12010015	10 12020015	10 12030015	150	18 x 0.5	0.013	10 94001
10 12010030	10 12020030	10 12030030	300	18 x 0.5	0.023	10 94001
10 12010040	10 12020040	10 12030040	400	18 x 0.5	0.028	10 94005
10 12010050	10 12020050	10 12030050	500	18 x 0.5	0.034	10 94005
10 12010100	10 12020100	10 12030100	1000	18 x 0.5	0.070	10 94010
10 12010150	10 12020150	10 12030150	1500	18 x 0.5	0.080	10 94015
10 12010200	10 12020200	10 12030200	2000	18 x 0.5	0.115	10 94020
10 12010250	10 12020250	10 12030250	2500	18 x 0.5	0.140	10 94025
10 12010300	10 12020300	10 12030300	3000	18 x 0.5	0.180	10 94030
10 12010350	10 12020350	10 12030350	3500	18 x 0.5	0.200	10 94035
10 12010400	10 12020400	10 12030400	4000	18 x 0.5	0.225	10 94040
10 12010500	10 12020500	-	5000	18 x 0.5	0.275	10 94050
10 12010600	10 12020600	-	6000	18 x 0.5	0.355	10 94060
10 16010050	10 16020050	10 16030050	500	20 x 1.0	0.080	10 94005
10 16010100	10 16020100	10 16030100	1000	20 x 1.0	0.150	10 94010
10 16010150	10 16020150	10 16030150	1500	20 x 1.0	0.230	10 94015
10 16010200	10 16020200	10 16030200	2000	20 x 1.0	0.280	10 94020
10 16010250	10 16020250	10 16030250	2500	20 x 1.0	0.370	10 94025
10 16010300	10 16020300	10 16030300	3000	20 x 1.0	0.450	10 94030
10 16010350	10 16020350	10 16030350	3500	20 x 1.0	0.530	10 94035
10 16010400	10 16020400	10 16030400	4000	20 x 1.0	0.610	10 94040
10 16010500	10 16020500	-	5000	20 x 1.0	0.730	10 94050
10 16010600	10 16020600	-	6000	20 x 1.0	0.890	10 94060

• reading from right to left

- flexible version, cross section
- stainless spring steel
- non glare, matt surface
- etched graduation for a clear reading

type A = mm / mm top and bottom 1/1 mm graduation

type B = ½ mm / mm top ½ mm and bottom 1/1 mm graduation

type C = inch / mm top 1/64 ; 1/32 and 1/16 inch graduation,
bottom ½ mm and 1/1 mm

Our steel rules from 500 mm up to 4000 mm are marked with the EC Code.
These steel rules conform to EC Class II and are qualified as reference pieces.
Therefore please order our calibration certificate together with the rule.

type A



type B



type C



ART N°						ART N° CC
type A	type B	type C				
10 11010010	10 11020010	10 11030010	100	13 x 0.5	0.006	10 94001
10 11010015	10 11020015	10 11030015	150	13 x 0.5	0.008	10 94001
10 11010020	10 11020020	10 11030020	200	13 x 0.5	0.010	10 94001
10 11010025	10 11020025	10 11030025	250	13 x 0.5	0.012	10 94001
10 11010030	10 11020030	10 11030030	300	13 x 0.5	0.015	10 94001
10 13010015	10 13020015	10 13030015	150	18 x 0.5	0.013	10 94001
10 13010030	10 13020030	10 13030030	300	18 x 0.5	0.023	10 94001
10 13010040	10 13020040	10 13030040	400	18 x 0.5	0.028	10 94005
10 13010050	10 13020050	10 13030050	500	18 x 0.5	0.034	10 94005
10 13010100	10 13020100	10 13030100	1000	18 x 0.5	0.070	10 94010
10 13010150	10 13020150	10 13030150	1500	18 x 0.5	0.080	10 94015
10 13010200	10 13020200	10 13030200	2000	18 x 0.5	0.115	10 94020
10 13010250	10 13020250	10 13030250	2500	18 x 0.5	0.140	10 94025
10 13010300	10 13020300	10 13030300	3000	18 x 0.5	0.180	10 94030
10 13010350	10 13020350	10 13030350	3500	18 x 0.5	0.200	10 94035
10 13010400	10 13020400	10 13030400	4000	18 x 0.5	0.225	10 94040
10 13010500	10 13020500	-	5000	18 x 0.5	0.275	10 94050
10 13010600	10 13020600	-	6000	18 x 0.5	0.355	10 94060
10 17010050	10 17020050	10 17030050	500	20 x 1.0	0.080	10 94005
10 17010100	10 17020100	10 17030100	1000	20 x 1.0	0.150	10 94010
10 17010150	10 17020150	10 17030150	1500	20 x 1.0	0.230	10 94015
10 17010200	10 17020200	10 17030200	2000	20 x 1.0	0.280	10 94020
10 17010250	10 17020250	10 17030250	2500	20 x 1.0	0.370	10 94025
10 17010300	10 17020300	10 17030300	3000	20 x 1.0	0.450	10 94030
10 17010350	10 17020350	10 17030350	3500	20 x 1.0	0.530	10 94035
10 17010400	10 17020400	10 17030400	4000	20 x 1.0	0.610	10 94040
10 17010500	10 17020500	-	5000	20 x 1.0	0.730	10 94050
10 17010600	10 17020600	-	6000	20 x 1.0	0.890	10 94060



• reading from left to right

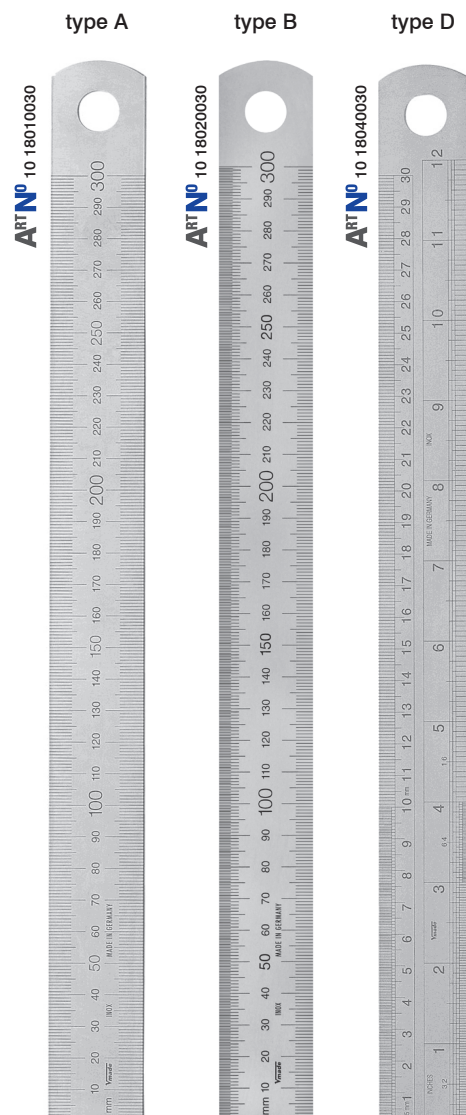
- semi rigid version, with wide cross section
- stainless spring steel
- non glare, matt surface
- etched graduation for a clear reading
- up to 2000 mm in a vinyl bag

type A = mm / mm top and bottom 1/1 mm graduation

type B = ½ mm / mm top ½ mm and bottom 1/1 mm graduation

type D = inch / mm top 1/64 ; 1/32 and 1/16 inch graduation,
bottom ½ mm and 1/1 mm

Our steel rules from 500 mm up to 4000 mm are marked with the EC Code.
These steel rules conform to EC Class II and are qualified as reference pieces.
Therefore please order our calibration certificate together with the rule.



ART N°						ART N° CC
type A	type B	type D				
10 18010030	10 18020030	10 18040030	300	30 x 1.0	0.070	10 94001
10 18010050	10 18020050	10 18040050	500	30 x 1.0	0.115	10 94005
10 18010060	10 18020060	10 18040060	600	30 x 1.0	0.140	10 94010
10 18010100	10 18020100	10 18040100	1000	30 x 1.0	0.245	10 94010
10 18010150	10 18020150	10 18040150	1500	30 x 1.0	0.360	10 94015
10 18010200	10 18020200	10 18040200	2000	30 x 1.0	0.480	10 94020
10 18010300	10 18020300	10 18040300	3000	30 x 1.0	0.710	10 94030
10 18010400	10 18020400	10 18040400	4000	30 x 1.0	0.950	10 94040
10 18010500	10 18020500	-	5000	30 x 1.0	1.180	10 94050
10 18010600	10 18020600	-	6000	30 x 1.0	1.410	10 94060
10 18010700	10 18020700	-	7000	30 x 1.0	1.650	10 94070
10 18010800	10 18020800	-	8000	30 x 1.0	1.890	10 94080
10 18010900	10 18020900	-	9000	30 x 1.0	2.115	10 94090
10 18011000	10 18021000	-	10000	30 x 1.0	2.350	10 94100
10 18011100	10 18021100	-	11000	30 x 1.0	2.585	10 94110
10 18011200	10 18021200	-	12000	30 x 1.0	2.820	10 94120
10 24010050	10 24020050	10 24040050	500	40 x 2.0	0.340	10 94005
10 24010100	10 24020100	10 24040100	1000	40 x 2.0	0.650	10 94010
10 24010150*	10 24020150*	10 24040150*	1500	40 x 2.0	0.950	10 94015
10 24010200*	10 24020200*	10 24040200*	2000	40 x 2.0	1.250	10 94020

• **reading from right to left**

- semi rigid version, with wide cross section
- stainless spring steel
- non glare, matt surface
- etched graduation for a clear reading
- up to 2000 mm in a vinyl bag

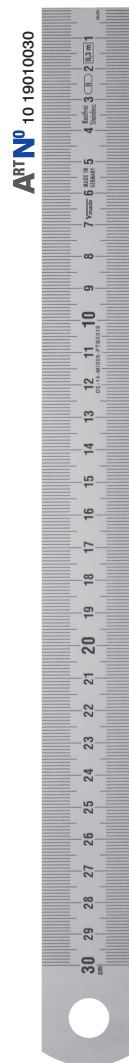
type A= mm / mm top and bottom 1/1 mm graduation

type B= ½ mm / mm top ½ mm and bottom 1/1 mm graduation

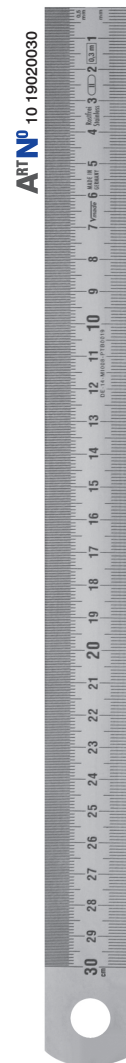
type D= inch / mm top 1/64 ; 1/32 and 1/16 inch graduation,
bottom ½ mm and 1/1 mm

Our steel rules from 500 mm up to 4000 mm are marked with the EC Code.
These steel rules conform to EC Class II and are qualified as reference pieces.
Therefore please order our calibration certificate together with the rule.

type A



type B



type D



ART N°						ART N°
type A	type B	type D	mm		KG	CC
10 19010030	10 19020030	10 19040030	300	30 x 1.0	0.070	10 94001
10 19010050	10 19020050	10 19040050	500	30 x 1.0	0.115	10 94005
10 19010060	10 19020060	10 19040060	600	30 x 1.0	0.140	10 94010
10 19010100	10 19020100	10 19040100	1000	30 x 1.0	0.245	10 94010
10 19010150	10 19020150	10 19040150	1500	30 x 1.0	0.360	10 94015
10 19010200	10 19020200	10 19040200	2000	30 x 1.0	0.480	10 94020
10 19010300	10 19020300	10 19040300	3000	30 x 1.0	0.710	10 94030
10 19010400	10 19020400	10 19040400	4000	30 x 1.0	0.950	10 94040
10 19010500	10 19020500	-	5000	30 x 1.0	1.180	10 94050
10 19010600	10 19020600	-	6000	30 x 1.0	1.410	10 94060
10 19010700	10 19020700	-	7000	30 x 1.0	1.650	10 94070
10 19010800	10 19020800	-	8000	30 x 1.0	1.890	10 94080
10 19010900	10 19020900	-	9000	30 x 1.0	2.115	10 94090
10 19011000	10 19021000	-	10000	30 x 1.0	2.350	10 94100
10 19011100	10 19021100	-	11000	30 x 1.0	2.585	10 94110
10 19011200	10 19021200	-	12000	30 x 1.0	2.820	10 94120
10 25010050	10 25020050	10 25040050	500	40 x 2.0	0.340	10 94005
10 25010100	10 25020100	10 25040100	1000	40 x 2.0	0.650	10 94010
10 25010150*	10 25020150*	10 25040150*	1500	40 x 2.0	0.950	10 94015
10 25010200*	10 25020200*	10 25040200*	2000	40 x 2.0	1.250	10 94020



Stainless Steel Rules, matt chromed

acc. to DIN 2004/22/ECII

• graduations on front and back

- graduation deeply etched and black chromed
- matt chromed, non glare surface
- stainless spring steel

front top and bottom 1/1 mm graduation

back top 1/2 mm and bottom 1/2 mm graduation



ART NO	mm		KG	ART NO CC
10 01040015	150	13 x 0.5	0.008	10 94001
10 01040030	300	13 x 0.5	0.015	10 94001
10 01240050	500	18 x 0.5	0.034	10 94005
10 01240100	1000	18 x 0.5	0.070	10 94010
10 01260030	300	30 x 1.0	0.070	10 94001
10 01260050	500	30 x 1.0	0.115	10 94005
10 01260100	1000	30 x 1.0	0.245	10 94010

ART NO 10 01040030

front

back



Stainless Steel Rules, with laser engraving

acc. to DIN 2004/22/ECII

• reading from left to right or right to left

- precise, deep graduation with laser engraved
- non glare, matt surface
- stainless spring steel
- with identification-no.

ART NO 10 18060030

Our steel rules up to 2000 mm conform to EC Class I and are qualified as reference pieces.

Therefore please order our calibration certificate together with the rule.

Because of the deep graduation, these rules are suitable especially where a high stress is required to scale.



ART NO	mm		KG	ART NO CC
graduation in mm/mm from left to right				
10 10060015	150	13 x 0.5	0.008	10 94001
10 10060030	300	13 x 0.5	0.015	10 94001
10 12060050	500	20 x 0.5	0.038	10 94005
10 12060100	1000	20 x 0.5	0.082	10 94010
10 18060030	300	30 x 1.0	0.070	10 94001
10 18060050	500	30 x 1.0	0.115	10 94005
10 18060100	1000	30 x 1.0	0.245	10 94010
10 18060200	2000	30 x 1.0	0.480	10 94020
graduation in mm/mm from right to left				
10 11060015	150	13 x 0.5	0.008	10 94001
10 11060030	300	13 x 0.5	0.015	10 94001
10 13060050	500	20 x 0.5	0.038	10 94005
10 13060100	1000	20 x 0.5	0.082	10 94010
10 19060030	300	30 x 1.0	0.070	10 94001
10 19060050	500	30 x 1.0	0.115	10 94005
10 19060100	1000	30 x 1.0	0.245	10 94010
10 19060200	2000	30 x 1.0	0.480	10 94020



★★★★★
MASTER-LINE® Stainless Steel Rules, with laser engraving
 acc. to DIN 2004/22/ECII

- reading from left to right
- semi rigid version, with wide cross section
- stainless spring steel, with non glare, matt surface
- precise, deep graduation with laser engraved
- with identifications-no. and calibration certificate

type A= mm / mm top and bottom 1/1 mm graduation

type B= ½ mm / mm top ½ mm and bottom 1/1 mm graduation

Our steel rules from 500 mm up to 4000 mm are marked with the EC Code.
 These steel rules conform to EC Class II and are qualified as reference piece.
 Therefore please order our calibration certificate together with the rule.
 Because of the deep graduation, these rules are suitable especially
 where a high stress is required to scale.

type A



type B



ART N°					
type A	type B				
10 01810050	10 01820050	500	30 x 2.0	0.220	inclusive
10 01810100	10 01820100	1000	30 x 2.0	0.490	inclusive
10 01810150*	10 01820150*	1500	30 x 2.0	0.715	inclusive
10 01810200*	10 01820200*	2000	30 x 2.0	0.950	inclusive
10 02410100	10 02420100	1000	40 x 2.0	0.650	inclusive
10 02410200*	10 02420200*	2000	40 x 2.0	1.250	inclusive

tolerances according to EC II

total length in mm	500	1000	1500	2000	2500	3000
permitted tolerances in mm	0.40	0.50	0.60	0.70	0.80	0.90

★★★★★
RED-LINE® Stainless Steel Rules, with laser engraving
 acc. BS

- reading from left to right
- metric graduations conform to the tolerance requirements of British Standard (BS 4372:1968)
- stainless spring steel, with non glare, matt surface
- precise, deep graduation with laser engraved
- with identifications-no.

ART N° 10 26440050



ART N°				
10 26440050	500	30 x 2.0	0.220	10 94205
10 26440100	1000	30 x 2.0	0.490	10 94210



Stainless Steel Rules, with etched scale

NEW

- Tolerance EC II, conform to MID-Code, CE

- precise, etched scale, with clear reading
- stainless steel, non-glare, matt surface
- semi-rigid, with wide cross-section

Option

- Workshop calibration certificate and Ident.-No. with surcharge

These Steel Rules are manufactured acc. to the MID and are qualified as reference or master pieces. Tolerance Class EC II.

ART^{Nº} 10 18110050



ART^{Nº} 10 19110050



- type A = mm / mm top and bottom with 1/1 mm graduation
type B = ½ mm / mm top with 1/2 mm and bottom with 1/1 mm graduation



ART ^{Nº} type A	ART ^{Nº} type B	ART ^{Nº} type A	ART ^{Nº} type B	mm	mm	KG	ART ^{Nº} CC
graduation left to right		graduation right to left					
10 18110050	10 18120050	10 19110050	10 19120050	500	30 x 1.0	0.115	10 94305
10 18110100	10 18120100	10 19110100	10 19120100	1000	30 x 1.0	0.245	10 94310
10 18110150	10 18120150	10 19110150	10 19120150	1500	30 x 1.0	0.360	10 94315
10 18110200	10 18120200	10 19110200	10 19120200	2000	30 x 1.0	0.480	10 94320
10 18110300	10 18120300	10 19110300	10 19120300	3000	30 x 1.0	0.710	10 94330
10 18110400	10 18120400	10 19110400	10 19120400	4000	30 x 1.0	0.950	10 94340
10 24110050	10 24120050	10 25110050	10 25120050	500	40 x 2.0	0.340	10 94305
10 24110100	10 24120100	10 25110100	10 25120100	1000	40 x 2.0	0.650	10 94310
10 24110200*	10 24120200*	10 25110200*	10 25120200*	2000	40 x 2.0	1.250	10 94320



Stainless Steel Rules, with laser engraved scale

NEW

- Tolerance EC II, conform to MID-Code, CE

- precise and deep, laser engraved scale, with clear reading
- stainless steel, non-glare, matt surface
- semi-rigid, with wide cross-section

Option

- Workshop calibration certificate and Ident.-No. with surcharge

These Steel Rules are manufactured acc. to the MID and are qualified as reference or master pieces. Tolerance Class EC II.

ART^{Nº} 10 08110050



ART^{Nº} 10 09110050



- type A = mm / mm top and bottom with 1/1 mm graduation
type B = ½ mm / mm top with 1/2 mm and bottom with 1/1 mm graduation



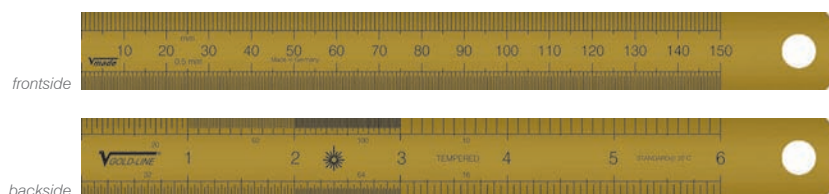
ART ^{Nº} type A	ART ^{Nº} type B	ART ^{Nº} type A	ART ^{Nº} type B	mm	mm	KG	ART ^{Nº} CC
graduation left to right		graduation right to left					
10 08110050	10 08120050	10 09110050	10 09120050	500	30 x 1.0	0.115	10 94305
10 08110100	10 08120100	10 09110100	10 09120100	1000	30 x 1.0	0.245	10 94310
10 08110150	10 08120150	10 09110150	10 09120150	1500	30 x 1.0	0.360	10 94315
10 08110200	10 08120200	10 09110200	10 09120200	2000	30 x 1.0	0.480	10 94320
10 04110050	10 04120050	10 05110050	10 05120050	500	40 x 2.0	0.340	10 94305
10 04110100	10 04120100	10 05110100	10 05120100	1000	40 x 2.0	0.650	10 94310
10 04110200*	10 04120200*	10 05110200*	10 05120200*	2000	40 x 2.0	1.250	10 94320

GOLD-LINE® Stainless Steel Rules, gold plated **NEW**

Tolerance acc. to EC II (2004/22/EC)

- graduation on front- and rearside
- reading from left to right

- precise, deep laser engraved scale
- non-glare, matt surface, with clear reading
- sea water resistant
- stainless steel, with gold plated surface



frontside 1/1 mm and 1/2 mm
backside 1/10; 1/16; 1/20; 1/32; 1/64; 1/50; 1/100 inch



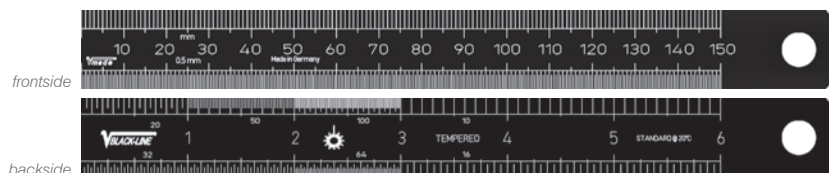
ART NO	mm / inch		KG	ART NO CC
10 26432015	150 / 6	18 x 0.5	0.013	10 94300
10 26432030	300 / 12	30 x 1.0	0.070	10 94301

BLACK-LINE® Stainless Steel Rules, black anodized **NEW**

Tolerance acc. to EC II (2004/22/EC)

- graduation on front- and rearside
- reading from left to right

- precise, deep laser engraved scale
- non-glare, matt surface, with clear reading
- carbon spring steel, with black anodized surface



frontside 1/1 mm and 1/2 mm
backside 1/10; 1/16; 1/20; 1/32; 1/64; 1/50; 1/100 inch



ART NO	mm / inch		KG	ART NO CC
10 26431015	150 / 6	18 x 0.5	0.013	10 94300
10 26431030	300 / 12	30 x 1.0	0.070	10 94301
10 26431045	450 / 18	30 x 1.0	0.105	10 94302
10 26431060	600 / 24	30 x 1.0	0.140	10 94303
10 26431100	1000 / 40	30 x 1.0	0.245	10 94304

MASTER-LINE® Stainless Steel Rules, with magnetic inserts **NEW**

Tolerance acc. to EC II (2004/22/EC)

- graduation on front- and rearside
- reading from left to right

- with two straight ends without whole
- precise, deep laser engraved scale
- non-glare, matt surface, with clear reading
- with detachable magnetic inserts
- stainless steel



frontside 1/2 mm und 1/1 mm



backside 1/32 und 1/64 inch



with magnetic inserts



ART NO	mm / inch		KG	ART NO CC
10 26433015	150 / 6	20 x 1.0	0.030	10 94300
10 26433030	300 / 12	30 x 1.0	0.070	10 94301
10 26433060	600 / 24	30 x 1.0	0.155	10 94302
10 26433090	900 / 36	30 x 1.0	0.210	10 94303
10 26433120	1200 / 48	30 x 1.0	0.280	10 94304

1a

2

3

4

5

6

7

8

9

10

11

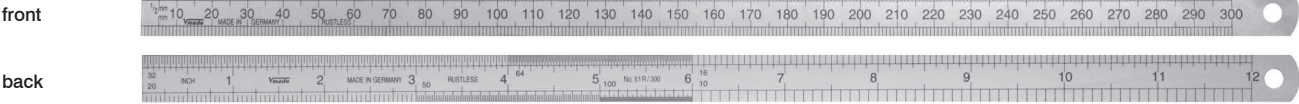
★★★★★
BLUE-LINE® Stainless Steel Rules
metric graduations acc. to BS

- **reading from left to right**
- stainless spring steel
- non glare, matt surface
- etched graduation for a clear reading

front top ½ mm and bottom 1/1 mm graduation

back top 1/16; 1/32; 1/64 inch – bottom 1/10; 1/20; 1/50; 1/100 inch

ART N° 10 26330030



ART N°	mm / inch		KG	ART N° CC
10 26330015	150 / 6	13 x 0.5	0.008	10 94201
10 26330030	300 / 12	13 x 0.5	0.015	10 94201
10 26430015	150 / 6	18 x 0.5	0.013	10 94201
10 26430030	300 / 12	30 x 1.0	0.070	10 94201

tolerances according to British Standard (BS 4372: 1968)				
total length graduation in ± mm	150	300	500	1000
permitted tolerance in ± mm	0.10	0.10	0.20	0.25

★★★★★
BLUE-LINE® Stainless Steel Rules
acc. to DIN 2004/22/ECII

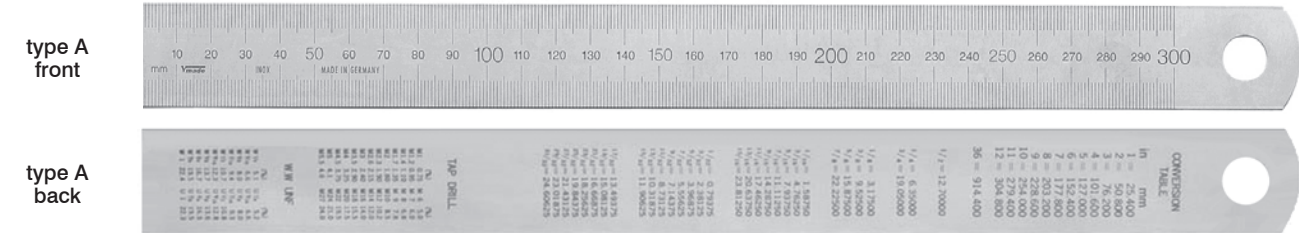
- **reading from left to right**
- **with conversion table on the backside**
- etched graduation for a clear reading
- non glare, matt surface
- stainless spring steel

type A = mm / mm top and bottom 1/1 mm graduation

type B = ½ mm / mm top ½ mm and bottom 1/1 mm graduation

type C = ½ mm / mm/inch top ½ mm and 1/1 mm, bottom 1/64 ; 1/32 and 1/16 inch graduation

ART N° 10 55030030



ART N°			mm	mm		KG	ART N° CC
type A	type B	type C	type A + B	type C			
10 55030030	10 55050030	10 55040030	300	300 / 12	30 x 1.0	0.070	10 94001
10 55030050	10 55050050	10 55040050	500	500 / 20	30 x 1.0	0.115	10 94005
10 55030100	10 55050100	10 55040100	1000	1000 / 40	30 x 1.0	0.245	10 94010
10 55030200	10 55050200	10 55040200	2000	2000 / 80	30 x 1.0	0.480	10 94020




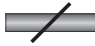


- stainless spring steel
- non glare, matt surface
- etched graduation for a clear reading
- graduation reading from left to right, zero-point in the middle
- top and bottom 1/1 mm graduation

ART^{NO} 10 18010030-0-



ART^{NO} 10 10010020-0-



ART ^{NO}	 mm		 KG	
10 10010010-0-	50 - 0 - 50	13 x 0.5	0.006	10 94001
10 10010015-0-	75 - 0 - 75	13 x 0.5	0.008	10 94001
10 10010020-0-	100 - 0 - 100	13 x 0.5	0.010	10 94005
10 10010030-0-	150 - 0 - 150	13 x 0.5	0.015	10 94005
10 10010040-0-	200 - 0 - 200	13 x 0.5	0.020	10 94005
10 10010050-0-	250 - 0 - 250	13 x 0.5	0.025	10 94010
10 10010060-0-	300 - 0 - 300	13 x 0.5	0.030	10 94010
10 10010080-0-	400 - 0 - 400	13 x 0.5	0.040	10 94015
10 10010100-0-	500 - 0 - 500	13 x 0.5	0.050	10 94020
10 12010010-0-	50 - 0 - 50	18 x 0.5	0.010	10 94001
10 12010015-0-	75 - 0 - 75	18 x 0.5	0.013	10 94001
10 12010020-0-	100 - 0 - 100	18 x 0.5	0.015	10 94005
10 12010030-0-	150 - 0 - 150	18 x 0.5	0.023	10 94005
10 12010040-0-	200 - 0 - 200	18 x 0.5	0.028	10 94010
10 12010050-0-	250 - 0 - 250	18 x 0.5	0.034	10 94010
10 12010060-0-	300 - 0 - 300	18 x 0.5	0.041	10 94010
10 12010080-0-	400 - 0 - 400	18 x 0.5	0.056	10 94015
10 12010100-0-	500 - 0 - 500	18 x 0.5	0.069	10 94020
10 16010010-0-	50 - 0 - 50	20 x 1.0	0.016	10 94001
10 16010015-0-	75 - 0 - 75	20 x 1.0	0.024	10 94001
10 16010020-0-	100 - 0 - 100	20 x 1.0	0.032	10 94005
10 16010030-0-	150 - 0 - 150	20 x 1.0	0.048	10 94005
10 16010040-0-	200 - 0 - 200	20 x 1.0	0.071	10 94010
10 16010050-0-	250 - 0 - 250	20 x 1.0	0.075	10 94010
10 16010060-0-	300 - 0 - 300	20 x 1.0	0.096	10 94010
10 16010080-0-	400 - 0 - 400	20 x 1.0	0.128	10 94015
10 16010100-0-	500 - 0 - 500	20 x 1.0	0.150	10 94020
10 18010010-0-	50 - 0 - 50	30 x 1.0	0.023	10 94001
10 18010015-0-	75 - 0 - 75	30 x 1.0	0.035	10 94001
10 18010020-0-	100 - 0 - 100	30 x 1.0	0.047	10 94005
10 18010030-0-	150 - 0 - 150	30 x 1.0	0.070	10 94005
10 18010040-0-	200 - 0 - 200	30 x 1.0	0.095	10 94010
10 18010050-0-	250 - 0 - 250	30 x 1.0	0.123	10 94010
10 18010060-0-	300 - 0 - 300	30 x 1.0	0.140	10 94010
10 18010070-0-	350 - 0 - 350	30 x 1.0	0.165	10 94015
10 18010080-0-	400 - 0 - 400	30 x 1.0	0.196	10 94015
10 18010100-0-	500 - 0 - 500	30 x 1.0	0.246	10 94020
10 18010120-0-	600 - 0 - 600	30 x 1.0	0.280	10 94020
10 18010150-0-	750 - 0 - 750	30 x 1.0	0.360	10 94020
10 18010200-0-	1000 - 0 - 1000	30 x 1.0	0.492	10 94030
10 18010250-0-	1250 - 0 - 1250	30 x 1.0	0.606	10 94030
10 18010300-0-	1500 - 0 - 1500	30 x 1.0	0.720	10 94030
10 18010400-0-	2000 - 0 - 2000	30 x 1.0	0.985	10 94030
10 18010500-0-	2500 - 0 - 2500	30 x 1.0	1.231	10 94030

Rules in Special Design

1a

2

3

4

5

6

7

8

9

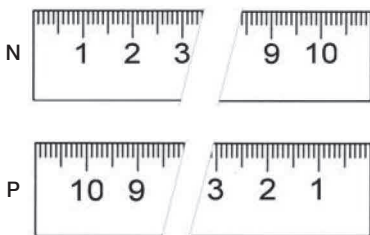
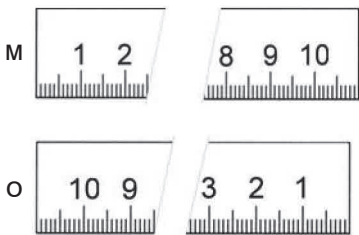
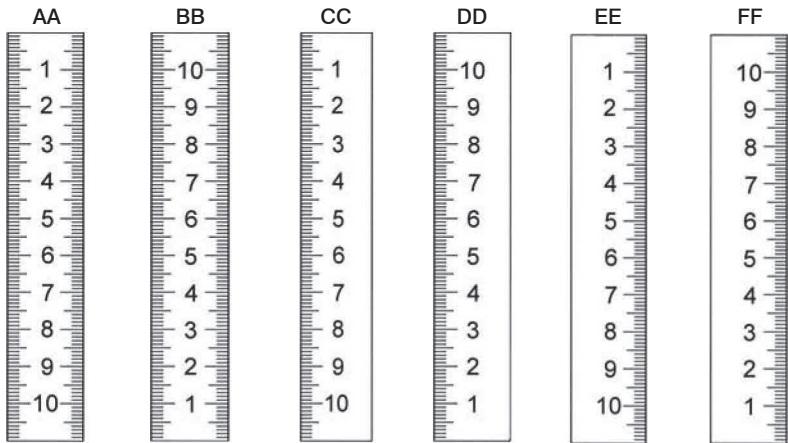
10

11


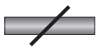

BLUE-LINE® Stainless Steel Rules

acc. to workshop grade


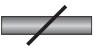

- stainless spring steel
- non glare, matt surface
- etched graduation for a clear reading



ART N°

type AA	type BB	type CC	type DD	type EE	type FF				ART N° CC
10 30110030	10 40110030	10 30100030	10 40100030	10 30010030	10 40010030	300	18 x 0.5	0.019	10 94001
10 30110040	10 40110040	10 30100040	10 40100040	10 30010040	10 40010040	400	18 x 0.5	0.027	10 94005
10 30110050	10 40110050	10 30100050	10 40100050	10 30010050	10 40010050	500	18 x 0.5	0.034	10 94005
10 30110080	10 40110080	10 30100080	10 40100080	10 30010080	10 40010080	800	18 x 0.5	0.052	10 94010
10 30110100	10 40110100	10 30100100	10 40100100	10 30010100	10 40010100	1000	18 x 0.5	0.070	10 94010
10 30110150	10 40110150	10 30100150	10 40100150	10 30010150	10 40010150	1500	18 x 0.5	0.080	10 94015
10 30110200	10 40110200	10 30100200	10 40100200	10 30010200	10 40010200	2000	18 x 0.5	0.115	10 94020
10 30110250	10 40110250	10 30100250	10 40100250	10 30010250	10 40010250	2500	18 x 0.5	0.140	10 94025
10 30110300	10 40110300	10 30100300	10 40100300	10 30010300	10 40010300	3000	18 x 0.5	0.180	10 94030
10 30110350	10 40110350	10 30100350	10 40100350	10 30010350	10 40010350	3500	18 x 0.5	0.200	10 94035
10 30110400	10 40110400	10 30100400	10 40100400	10 30010400	10 40010400	4000	18 x 0.5	0.225	10 94040
10 30110500	10 40110500	10 30100500	10 40100500	10 30010500	10 40010500	5000	18 x 0.5	0.275	10 94050
10 30110600	10 40110600	10 30100600	10 40100600	10 30010600	10 40010600	6000	18 x 0.5	0.355	10 94060
10 30110800	10 40110800	10 30100800	10 40100800	10 30010800	10 40010800	8000	18 x 0.5	0.450	10 94080
10 30111000	10 40111000	10 30101000	10 40101000	10 30011000	10 40011000	10000	18 x 0.5	0.710	10 94100

ART N°

type M	type N	type O	type P				ART N° CC
10 26150015	10 26160015	10 27150015	10 27160015	150	13 x 0.5	0.008	10 94001
10 26150030	10 26160030	10 27150030	10 27160030	300	13 x 0.5	0.015	10 94001
10 26250050	10 26260050	10 27250050	10 27260050	500	18 x 0.5	0.034	10 94005
10 26250100	10 26260100	10 27250100	10 27260100	1000	18 x 0.5	0.070	10 94010
10 26250150	10 26260150	10 27250150	10 27260150	1500	18 x 0.5	0.080	10 94015
10 26250200	10 26260200	10 27250200	10 27260200	2000	18 x 0.5	0.115	10 94020
10 26250250	10 26260250	10 27250250	10 27260250	2500	18 x 0.5	0.140	10 94025
10 26250300	10 26260300	10 27250300	10 27260300	3000	18 x 0.5	0.180	10 94030
10 26250350	10 26260350	10 27250350	10 27260350	3500	18 x 0.5	0.200	10 94035
10 26250400	10 26260400	10 27250400	10 27260400	4000	18 x 0.5	0.225	10 94040
10 26250500	10 26260500	10 27250500	10 27260500	5000	18 x 0.5	0.275	10 94050
10 26250600	10 26260600	10 27250600	10 27260600	6000	18 x 0.5	0.355	10 94060

BLUE-LINE® Circumference Measuring Tape „UFM“ acc. to DIN 2004/22/ECI or ECII

ART N° 18 1601

- with etched or laser engraved scale
- for measuring diameters and circumferences
- application areas are among others manufacturers of: pipelines, boiler and tank construction, tire industry, forestry, etc.
- graduation in mm or inch available
- accuracy of total length with etched metric graduation according to EC II
- accuracy of total length with laser engraved metric graduation according to EC I
- hardened spring steel or stainless steel



Graduation: **mm**
Version: **etched**



ART N° stainless	ART N° carbon steel	circumference mm	diameter mm	mm		KG	ART N° CC
18 1601	18 1611	60 - 950	20 - 300	0.1	16 x 0.20	0.080	18 94001
18 1602	18 1612	940 - 2200	300 - 700	0.1	16 x 0.20	0.110	18 94002
18 1603	18 1613	2190 - 3460	700 - 1100	0.1	16 x 0.20	0.160	18 94003
18 1604	18 1614	3450 - 4720	1100 - 1500	0.1	16 x 0.20	0.190	18 94004
18 1605	18 1615	4710 - 5980	1500 - 1900	0.1	16 x 0.20	0.215	18 94005
18 1606	18 1616	5960 - 7230	1900 - 2300	0.1	16 x 0.20	0.250	18 94006
18 1607	18 1617	7220 - 8500	2300 - 2700	0.1	16 x 0.20	0.285	18 94007
18 1608	18 1618	8480 - 9760	2700 - 3100	0.1	16 x 0.20	0.305	18 94008
18 1609	18 1619	9730 - 11010	3100 - 3500	0.1	16 x 0.20	0.350	18 94009

Graduation: **mm**
Version: **laser engraved**



ART N° stainless	ART N° carbon steel	circumference mm	diameter mm	mm		KG	ART N° CC
18 1801	18 1811	60 - 950	20 - 300	0.1	16 x 0.20	0.080	18 94001
18 1802	18 1812	940 - 2200	300 - 700	0.1	16 x 0.20	0.110	18 94002
18 1803	18 1813	2190 - 3460	700 - 1100	0.1	16 x 0.20	0.160	18 94003
18 1804	18 1814	3450 - 4720	1100 - 1500	0.1	16 x 0.20	0.190	18 94004
18 1805	18 1815	4710 - 5980	1500 - 1900	0.1	16 x 0.20	0.215	18 94005
18 1806	18 1816	5960 - 7230	1900 - 2300	0.1	16 x 0.20	0.250	18 94006
18 1807	18 1817	7220 - 8500	2300 - 2700	0.1	16 x 0.20	0.285	18 94007
18 1808	18 1818	8480 - 9760	2700 - 3100	0.1	16 x 0.20	0.305	18 94008
18 1809	18 1819	9730 - 11010	3100 - 3500	0.1	16 x 0.20	0.350	18 94009

Graduation: **inch**
Version: **laser engraved**



ART N° stainless	ART N° carbon steel	circumference inch	diameter inch	inch		KG	ART N° CC
18 1901	18 1911	2.0 - 38.0	0.8 - 12.0	0.002 / 0.01	16 x 0.20	0.080	18 94001
18 1902	18 1912	37.0 - 87.0	12.0 - 28.0	0.002 / 0.01	16 x 0.20	0.110	18 94002
18 1903	18 1913	86.0 - 136.5	28.0 - 43.5	0.002 / 0.01	16 x 0.20	0.160	18 94003
18 1904	18 1914	136.0 - 186.0	43.5 - 59.0	0.002 / 0.01	16 x 0.20	0.190	18 94004
18 1905	18 1915	185.5 - 236.0	59.0 - 75.0	0.002 / 0.01	16 x 0.20	0.215	18 94005
18 1906	18 1916	235.5 - 285.0	75.0 - 91.0	0.002 / 0.01	16 x 0.20	0.250	18 94006